



**INTERNATIONAL DATA
SPACES ASSOCIATION**

LOGISTICS COMMUNITY

October 2018



WHY IMPLEMENT THE IDS APPROACH IN LOGISTICS?

“Managing data is a significant success factor for logistics companies nowadays.”

By means of data analysis companies can optimise both their own and their customers' supply chain.

Therefore, digitisation will shape new digital business models in logistics. In 2015, only one percent from a 1.100 billion Euro market derived from all-digital business models.

While market size will increase by approx. 200 billion Euro till 2021, it is expected that up to 20 percent will derive from digital and all-digital business models. Thus data and information will provide more transparency and various business opportunities for logistics companies.

But the data world in the logistics industry is characterized by a large number of local data islands.

As a result, these data are rarely used in cross-company or collaborative processes in the supply chain, and because of that the existing data potential is given away.

Therefore the aim of the International Data Spaces Initiative is to establish virtual data rooms for the standardized exchange and trading of data between subscribers, while at the same time maintaining their sovereignty over their own data. The focus of this pre-competitive project is to develop a scalable and secure architecture for such a data room using modern IT technologies.

WHY JOIN THE IDSA LOGISTICS COMMUNITY?

Leveraging the Industrial Data Space for the logistics industry demands for a domain-specific instantiation that addresses the characteristics and complex nature of global supply chains and transportation networks. Shaping a “Logistics Data Space” is an effort of a variety of organizations, such as logistic service providers (2PL, 3PL, 4PL), industrial and commercial enterprises, industry associations and research organizations.

That is why the Logistics Community within the International Data Space Association was founded. It ...



1

... aspires to identify cross-organizational requirements for the adaption of the IDS in logistics. Jointly conceptualizing and implementing logistics use cases aims at highlight the added value of applying the IDS in this domain. As a result, these efforts contribute to the architectural development and the dissemination of the IDS.

2

... serves as a networking platform for IDS practitioners to exchange on best practices in the field of data sovereignty and identify potential partners for use cases. To facilitate this, community workshops are held several times a year.

3

... strives to accelerate the exchange of research and practice with particular focus on logistics. This includes gaining insights into latest research and contributing to current developments by gathering feedback from the practical, domain-specific perspective of the community members.

COMMUNITY CHARTA

	Goal 1 Adoption of IDS for Logistics domain	Goal 2 Networking among IDS users from Logistics domain	Goal 3 Exchange with current IDS research activities
Possible activities and results	Specification of a „Logistics Data Space“ Position papers, use cases	Best practice presentations (success stories, use cases) Networking finding joint usage scenarios	Identification of practical requirements from Logistics Evaluation & dissemination of research results
Opportunities for IDSA members	Specific concepts & implementations	Finding peers & partners, exchange of experiences	Engage in topics & consortia by funded research

Current working streams and organization:

- Joint community use cases, implementing live data flows with 3+ parties, e. g. automotive supply chain scenarios and high-tech
- Position paper IDS in logistics to outline the added value of IDS in the logistics domain
- Quarterly community workshop at changing venues, web conferences, subgroups

Community Leaders



Martin Böhmer
Fraunhofer IML



Nuri Morava
DB Schenker



Christian Tummel
DB Schenker

COMMUNITY TARGET GROUP

The community is a results-oriented working group driven by the motivation and active participation of its members. It is not a sales platform.

Core community members are IDS users from the Logistics domain:

- Logistic Service Provider (2PL, 3PL, 4PL)
- industrial & commercial enterprises, incl. their suppliers and customers
- Providers of material handling equipment
- Standardization bodies, industry associations, research organizations

Associated community members contribute their implementation expertise:

- IT service providers
- Consulting firms
- Certification bodies

Current members of the logistics community:



Members of the IDS Association



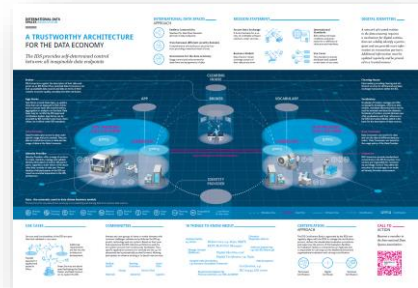
Selected IDSA Publications



Reference Architecture Model



White Paper Certification



Infographic IDS Ecosystem



Use Case Overview



Study on Data Exchange



Specification Lightweight Sensor Connector



International Data Spaces Association Magazine – Data Spaces_now!

Downloads available at www.internationaldataspaces.org/en/ressource-hub/publications-ids/

Code available at <https://github.com/industrial-data-space>

CONTACT

Head Office

INTERNATIONAL DATA SPACES ASSOCIATION

Joseph-von-Fraunhofer-Str. 2–4
44227 Dortmund | Germany

phone: +49 231 9743 619
mail: info@internationaldataspaces.org

WWW.INTERNATIONALDATASPACE.ORG

[@ids_association](#)